

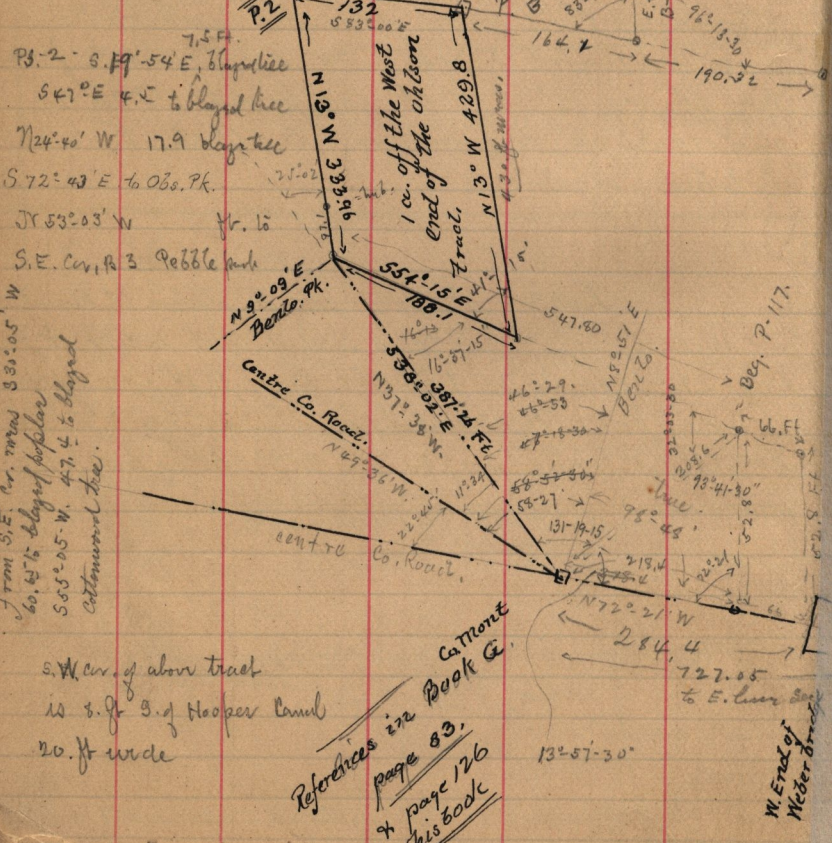
June 1-1893.

Survey made for N. Tanner, in Pebble Park, in S.E. 1/4 Sec. 30. T. 6. N. R. 1. W.

See also page 126 -

Descriptions. P-117, Pt S.E. 1/4 Sec. 30. T. 6. N. R. 1. W. Beg.

70/100 of ch. N. 1.0° ch. N 72° 00' W. from centre of W. End of, near
 Mayon bridge across, Weber riv, situate about 100 ft N. of
 U.C. RR. Thence N 54 1/2° W. 8.30 ch, N 13° W 5.06 ch, S 83° E 7.3
 chs, S 3 1/2° E, 2.88 ch, to beg.



From S.E. cor. meas 331.05' W
 60.45' to blazed pole
 S 05° 05' W. 47.4' to blazed
 Cottonwood tree.

7.5 Ft.
 P.S. 2 - S. 19° 54' E. blazed line
 S 47° E 4.5' to blazed tree
 N 24° 40' W 17.9 days tree
 S 72° 43' E to Obo. Pk.
 JX S 53° 03' W fr. to
 S.E. cor. P. 3 Pebble park

S.W. cor. of above tract
 is 3. ft S. of Hooper Canal
 20. ft wide

References in
 Book G.
 page 83,
 & page 126
 this book

W. End of
 Weber tract